



NetRex services up close

We pride ourselves on **quality hardware** and services that are practical and have **simple, user-friendly controls**.

How the NetRex solution works



High quality cameras

Choose top IP cameras from the leading Swedish manufacturer Axis Communications. We have been using them for all our solutions for more than 16 years and they are very reliable.

Cloud platform

You can easily connect the cameras and any other network elements to a cloud-based platform that offers complete remote management and many other features.

Wide range of services

A range of practical services are available on the platform: surveillance with recording, retail analytics, time-lapse video, streaming, reading vehicle registration plates and more.

What we provide for you:

The solution proposal

We will build a **solution that suits your needs** using the catalog of our services.

Installation and training

Our team will **install** everything for you and **explain** in detail how the system **works** and how to **operate it**.

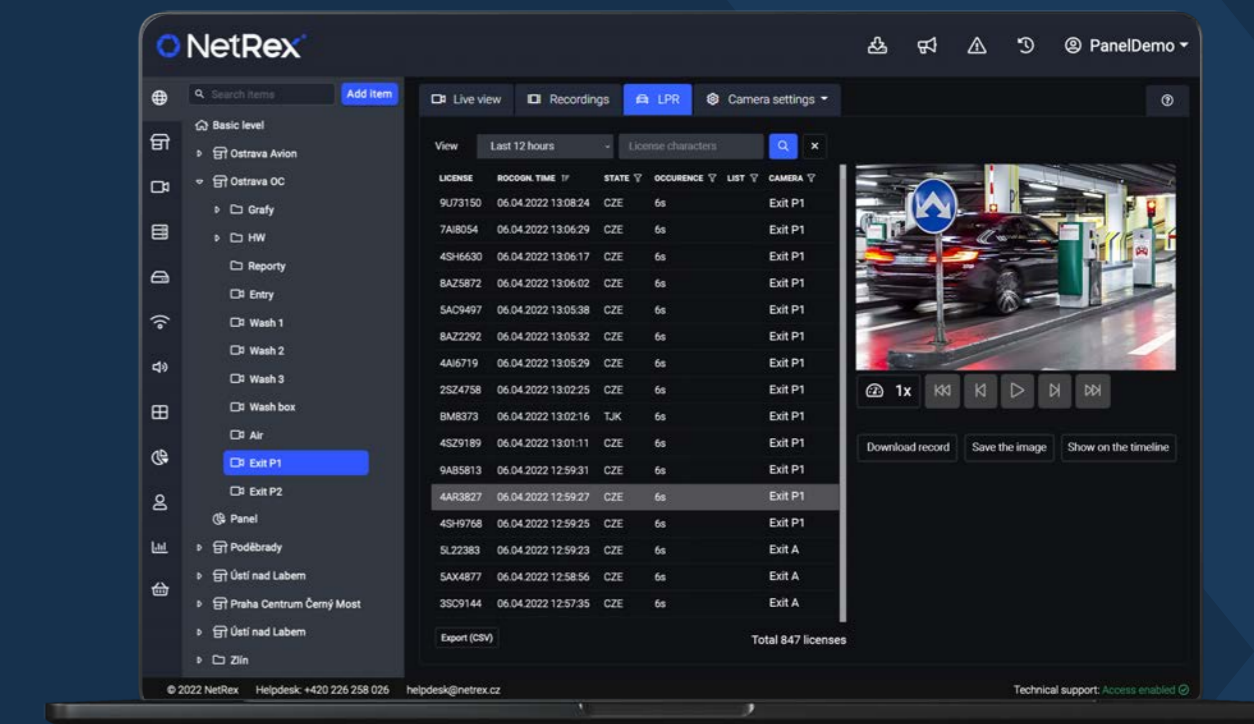
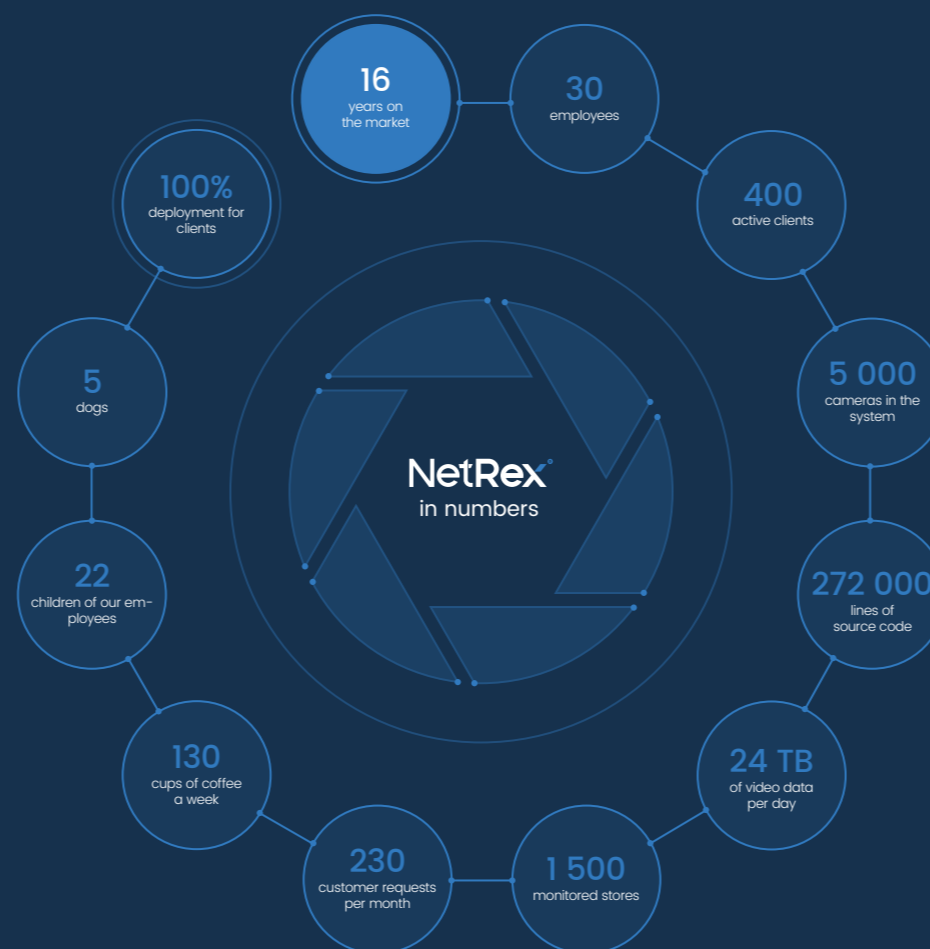
Support

Our **helpdesk** will help you at any time. In most cases, we can solve the problem remotely without a technician having to come out.

Who is NetRex?

We are a leading **IT company** offering **hosted video** services for **professional installations**. Since 2006, we have been continually exploring and discovering ways to **deploy modern network video technologies** with the ubiquitous internet. We strive to bring new ways to provide security, better control, and increase work efficiency.

We are a Czech company with a **presence and many installations in most European countries**. We have a **strong development team** and our close cooperation with the leading **IP camera** manufacturer, Swedish company **Axis Communications AB**, allows us to provide operational solutions to fulfill even the most demanding customer requirements. We believe that our services under the banner **"NetRex – Your Third Eye"** will appeal to you as well.



NetRex LPR

A service that aids license plate registration of both moving and stationary vehicles. Viewable with ease within the video recording.

Just do it smart!



Would you like to know more?

Do not hesitate to contact us.
+420 226 258 021 | info@netrex.cz

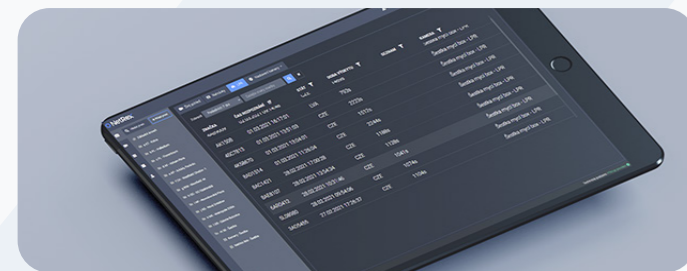
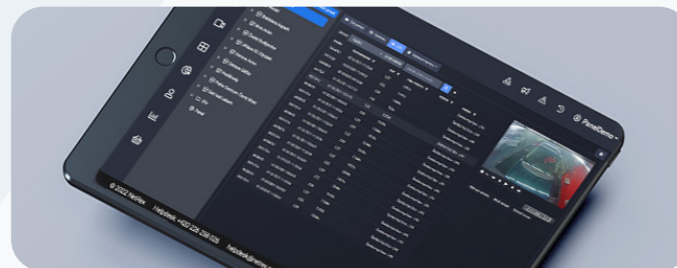
Certification & Membership:



Why NetRex LPR and what this service offers

01 Be informed of all present vehicles (IDENTIFICATION)

- Recognition and registration of license plates of all moving and stationary vehicles.
- Easily search the license plates you need, complete with the relevant video recordings.



02 Avoid complications (CONTROL TOOL)

- Find out the exact time a certain vehicle appears on your premises.
- Obtain evidence in the event of theft, damage allegations, unauthorized parking, etc. (car repair garages, car parks, car washes).
- Option to connect to your system for more in-depth control.

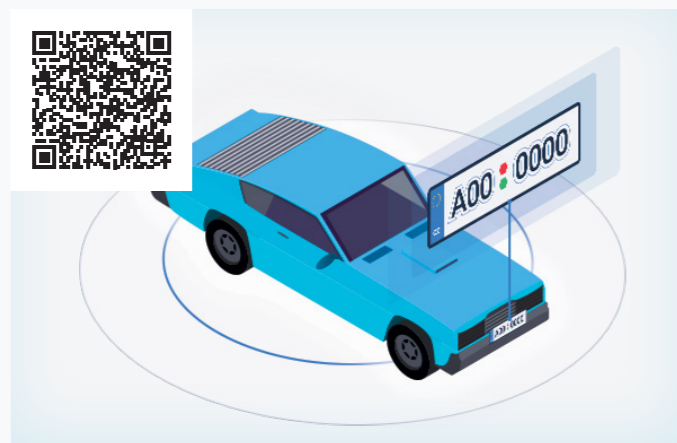
Suitable, for example, for city police and authorities or for car washes.

- NetRex LPR is the solution of choice for sites with a large number of automobiles, where registering license plates helps to ensure security.

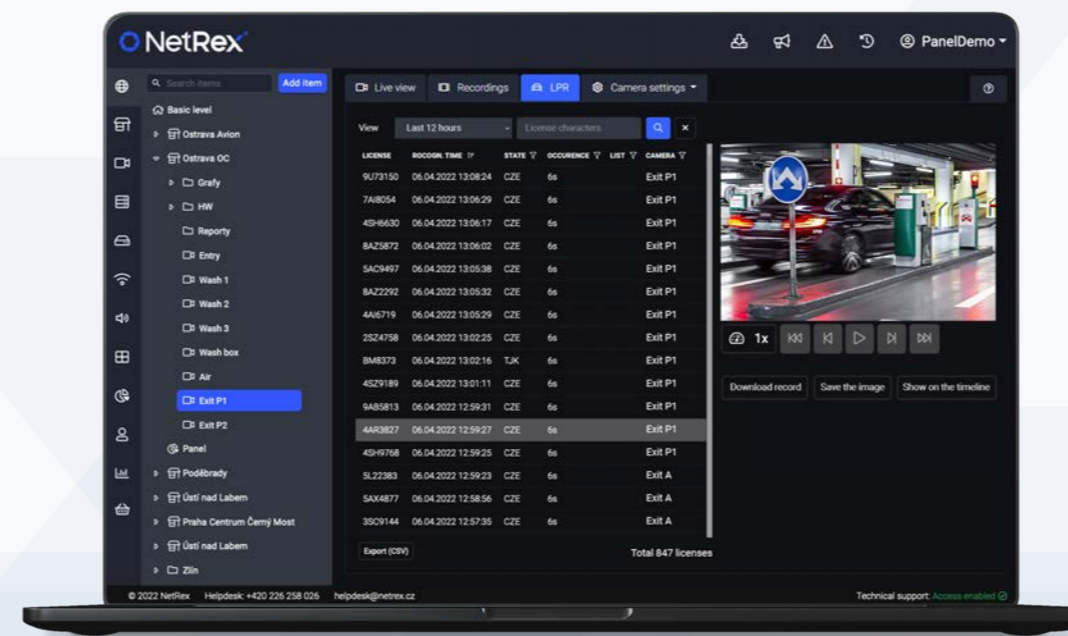
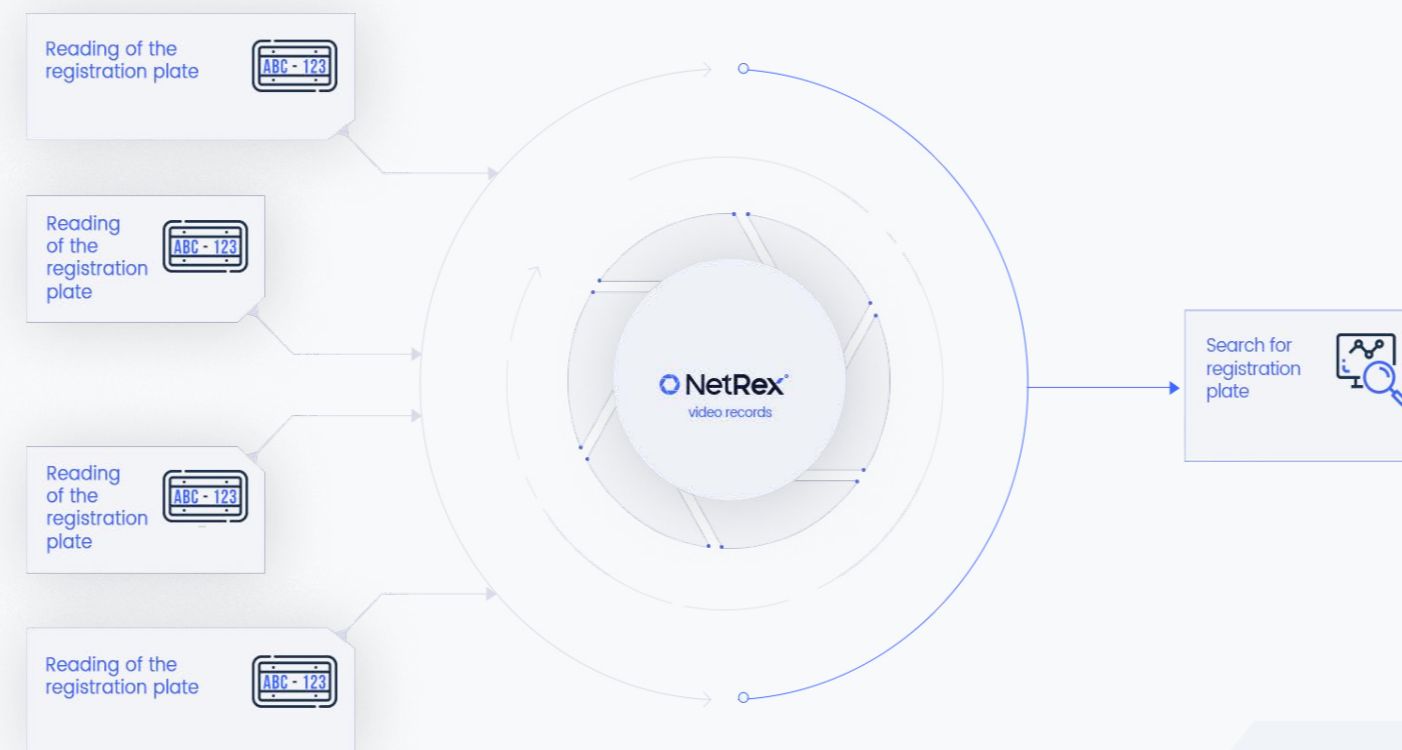
Solutions for city and municipal authorities



Solutions for car washes, car parks and service stations



NetRex LPR clearly



Technical parameters Netrex LPR

NetRex LPR	Premium	Basic
Pricing	54,90 € without VAT / month	46,90 € without VAT / month
Bulk discounts	Please contact our sales department.	
Website access	Yes	Yes
Mobile access	Yes	Yes
Accuracy of recognition	up to 95%	up to 95%
Simultaneous recognition of several plates	Yes	Yes
Central data storage	Yes	Yes
A live view of the camera	Yes	Yes
The number of simultaneous remote accesses to the camera	5	2
Remote video and audio recording (NetRex servers)	Maximum 1080p / 10fps, guaranteed 45 days of recording	Maximum 720p / 10fps, guaranteed 7 days of recording
Local video and sound recording	Maximum camera resolution and frame rate, up to 45 days of recording	Maximum camera resolution and frame rate, up to 7 days of recording
Easy access to records and searches	Yes, even from more cameras as well	Yes, even from more cameras as well
Export data	Yes	Yes
Automatic reports	Yes	Yes
Continuous surveillance of system functionality 24/7	Yes	Yes
Logging of events	Yes	Yes
Secure SSL access	Yes	Yes
Event notification by email / push notifications	Yes	Yes
Subordinate user accounts	Yes	Yes
Access to system features through the application interface	Yes	Yes
Customer support	E-mail and telephone (working days 9:00–18:00)	
Possibility to acquire extended support (SLA)	Yes	Yes